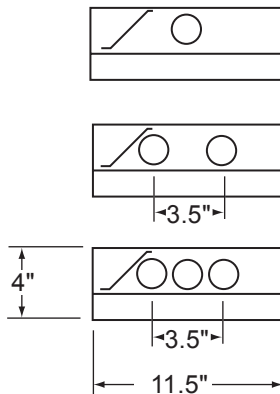
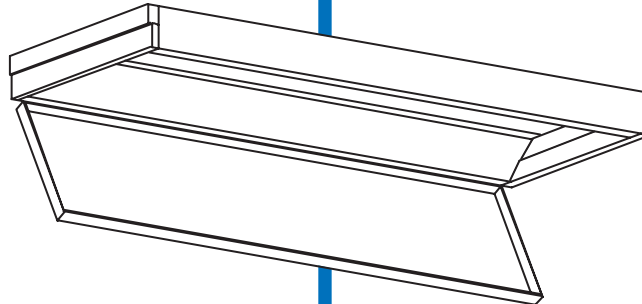


SERIES 341

1X4

Clean Room Class 1000



FEATURES:

- POST PAINTED HIGH REFLECTANCE POWDER COAT FINISH
- GASKETED (CLOSED CELL POLYURETHANE) TO AID IN KEEPING PARTICULATE MATTER FROM ENTERING THE ROOM.
- COMPATIBLE WITH BOTH 1" AND 1 1/2" T-BAR CEILINGS
- FLANGED FIXTURES AVAILABLE FOR DRYWALL CEILINGS (SEE ACCESSORIES SECTION)



UNION MADE IN THE USA.

ORDERING:

NOMINAL SIZE	LAMPS	CATALOG NUMBER
1' X 4'	1-FO32	341-12A-148T8
1' X 4'	2-FO32	341-12A-248T8
1' X 4'	3-FO32	341-12A-348T8

INSERT VOLTAGE AT END OF CATALOG NUMBER

NOTES:

1. 12A DENOTES AN ARCYLIC .125 PATTERN 12 LENS PROVIDED AS STANDARD UNLESS A SHIELDING OPTION IS SPECIFIED
2. NOT SUITABLE FOR HARSH ENVIRONMENTS
3. GASKETING PROVIDED FOR FIELD INSTALLATION

MANUFACTURING
1715 KIBBY ROAD - MERCED - CALIFORNIA - 95340
(209) 723-9120 - FAX: (209) 723-9131

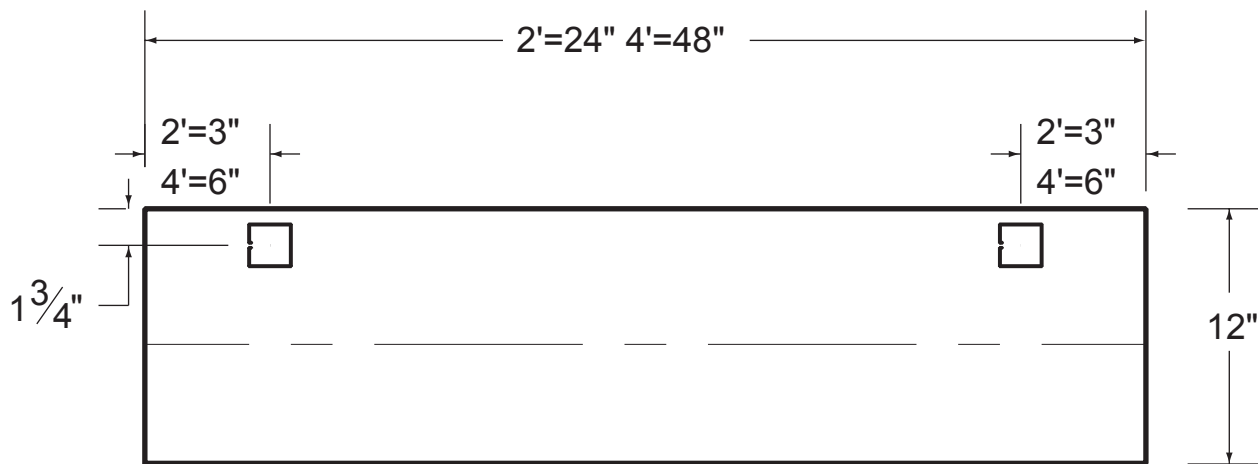
SALES OFFICE
14722 WICKS BLVD. - SAN LEANDRO - CALIFORNIA - 94577-6718
(510) 667-6950 - FAX: (510) 667-6959

BACK DETAIL



WIRE ACCESS
COVER PLATE

Back detail symbols



NOTE

All fixtures must be installed, wired and grounded in accordance with the National Electric Code and all other applicable codes.

!!! WARNING !!!

RISK OF FIRE OR ELECTRICAL SHOCK. ELECTRICAL PARTS MAY BE DAMAGED WHEN DRILLING OR USING "TEK" SCREWS FOR INSTALLATION OF MOUNTING HARDWARE. CHECK ENCLOSED WIRING AND COMPONENTS. USE CAUTION WHEN DRILLING "TEK" SCREWS INTO A BLIND AREA. TO PREVENT WIRING DAMAGE DO NOT EXPOSE WIRING TO SHARP EDGES.

