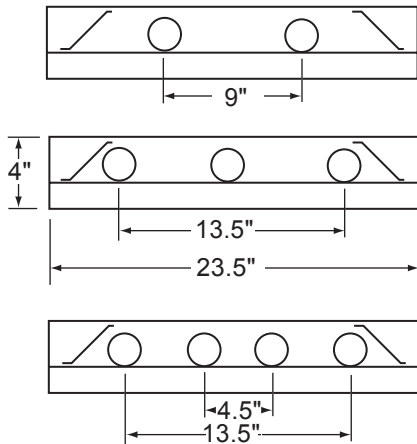
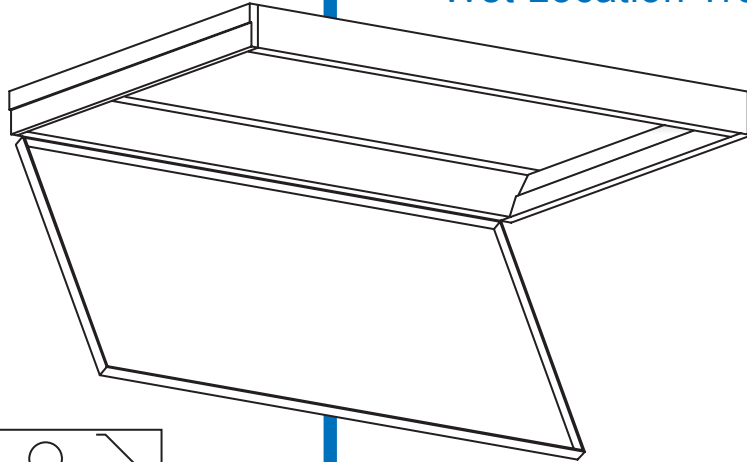


SERIES 332

2X2 & 2X4

Clean Room Class 100

Wet Location Troffer



FEATURES:

- POST PAINTED HIGH REFLECTANCE POWDER COAT FINISH
- CAULKED AND GASKETED (CLOSED CELL POLYURETHANE) TO AID IN KEEPING PARTICULATE MATTER FROM ENTERING THE ROOM.
- COMPATIBLE WITH BOTH 1" AND 1 1/2" T-BAR CEILINGS
- UL LISTED FOR WET LOCATIONS COVERED CEILING INSTALLATIONS
- CONTINUOUS GASKETED AND CAULKED DOOR SECURED USING 6 SCREWS



UNION MADE IN THE USA.

ORDERING:

NOMINAL SIZE	LAMPS	CATALOG NUMBER
2' X 2'	2-FB032	332-12A-2UT8*
2' X 2'	2-FO17	332-12A-224T8
2' X 4'	2-FO32	332-12A-248T8
2' X 2'	3-FO17	332-12A-324T8
2' X 4'	3-FO32	332-12A-348T8
2' X 2'	4-FO17	332-12A-424T8
2' X 4'	4-FO32	332-12A-448T8

INSERT VOLTAGE AT END OF CATALOG NUMBER

NOTES:

1. 12A DENOTES AN ACRYLIC .125 PATTERN 12 LENS PROVIDED AS STANDARD UNLESS A SHIELDING OPTION IS SPECIFIED
2. * SPECIFY 6" FBO32 OR 1 5/8" FBO31 LAMPS
3. NOT SUITABLE FOR HARSH ENVIRONMENTS
4. GASKETING PROVIDED FOR FIELD INSTALLATION
5. FLANGED FIXTURE NOT AVAILABLE

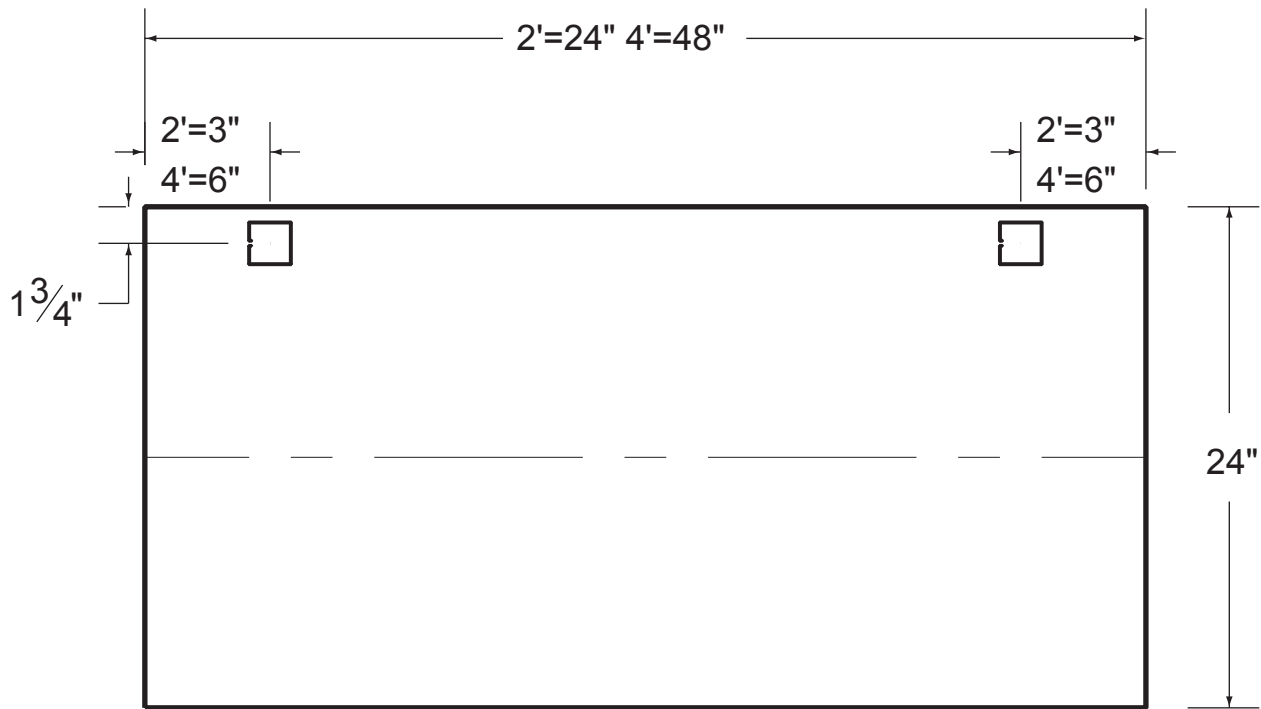
MANUFACTURING
1715 KIBBY ROAD - MERCED - CALIFORNIA - 95340
(209) 723-9120 - FAX: (209) 723-9131

SALES OFFICE
14722 WICKS BLVD. - SAN LEANDRO - CALIFORNIA - 94577-6718
(510) 667-6950 - FAX: (510) 667-6959

BACK DETAIL

 WIRE ACCESS
COVER PLATE

Back detail symbols



NOTE

All fixtures must be installed, wired and grounded in accordance with the National Electric Code and all other applicable codes.

!!! WARNING !!!

RISK OF FIRE OR ELECTRICAL SHOCK. ELECTRICAL PARTS MAY BE DAMAGED WHEN DRILLING OR USING "TEK" SCREWS FOR INSTALLATION OF MOUNTING HARDWARE. CHECK ENCLOSED WIRING AND COMPONENTS. USE CAUTION WHEN DRILLING "TEK" SCREWS INTO A BLIND AREA. TO PREVENT WIRING DAMAGE DO NOT EXPOSE WIRING TO SHARP EDGES.

