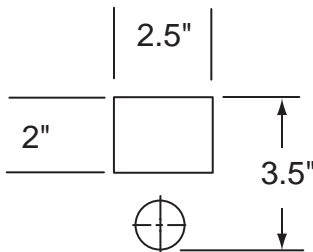
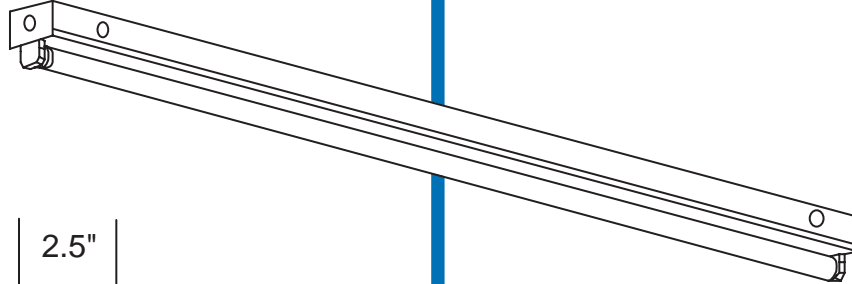


SERIES 202

Mini Strip



FEATURES:

- COMBINATION SOCKET PLATE AND BALLAST COVER WITH PRE-WIRED SNAP-IN LAMPHOLDERS
- AVAILABLE 18" TO 16' (TANDEM WIRED)
- COMBINATION END PLATE / CHANNEL COUPLER FURNISHED
- A VARIETY OF REFLECTORS AND MOUNTING DEVICES AVAILABLE
- POST PAINTED HIGH REFLECTANCE POWDER COAT FINISH - OPTIONAL



UNION MADE IN THE USA.

ORDERING:



NOMINAL SIZE	LAMPS	CATALOG NUMBER
2½" X 2'	1-FO17	202-124T8
2½" X 3'	1-FO25	202-136T8
2½" X 4'	1-FO32	202-148T8
2½" X 6'	2-FO25	202-136-2T8
2½" X 8'	2-FO32	202-148-2T8

INSERT VOLTAGE AT END OF CATALOG NUMBER

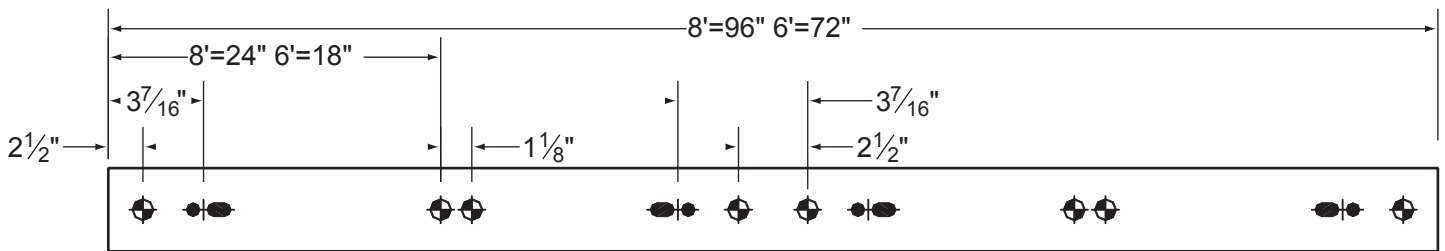
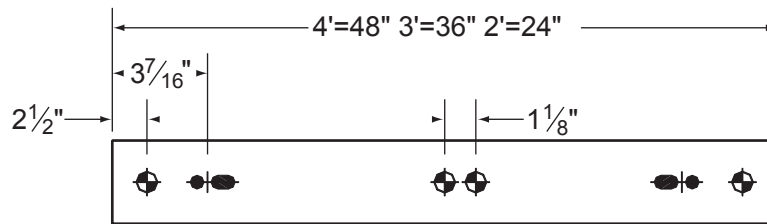
NOTES:

1. WIRE GUARDS AND REFLECTOR OPTIONS SHOWN ON BACK OF PAGE

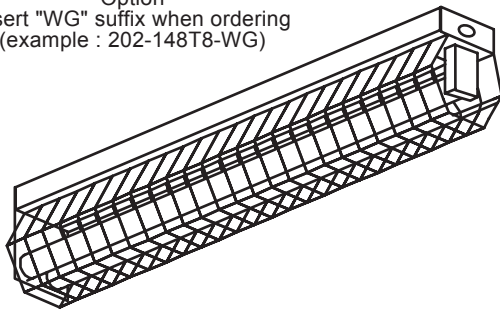
BACK DETAIL

 "S" HOOK SLOT
 7/8" K.O.

Back detail symbols

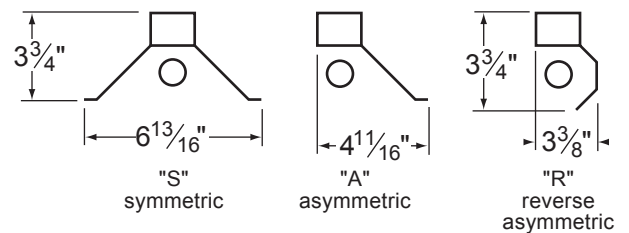


48" Wire Guard
Option
Insert "WG" suffix when ordering
(example : 202-148T8-WG)



ACCESSORIES

Reflector Options
Insert suffix when ordering
(example: 202A-148T8)



NOTE
All fixtures must be installed, wired and grounded in accordance with the National Electric Code and all other applicable codes.

!!! WARNING !!!
RISK OF FIRE OR ELECTRICAL SHOCK. ELECTRICAL PARTS MAY BE DAMAGED WHEN DRILLING OR USING "TEK" SCREWS FOR INSTALLATION OF MOUNTING HARDWARE. CHECK ENCLOSED WIRING AND COMPONENTS. USE CAUTION WHEN DRILLING "TEK" SCREWS INTO A BLIND AREA. TO PREVENT WIRING DAMAGE DO NOT EXPOSE WIRING TO SHARP EDGES.

