

FEATURES:

- ONE PIECE COMPRESSION MOLDED ENCLOSED AND GASKETED HOUSING WITH BRASS MOUNTING STUDS
- ONE WATERTIGHT HUB PROVIDED
- FIBERGLASS REINFORCED POLYESTER HOUSING
- DIFFUSER OF HIGH IMPACT ACRYLIC / DR MATERIAL WITH AN INTERNAL CRAPE PATTERN TO OBSCURE LAMPS
- POST PAINTED HIGH REFLECTANCE POWDER COAT FINISH ON STEEL HOUSING
- ZERO OR MINUS 20 DEGREE BALLASTS AVAILABLE
- MOUNTING BRACKETS FURNISHED FOR EASY INSTALLATION

UNION MADE IN THE USA.

ORDERING:

NOMINAL LENGTH	LAMPS	CATALOG NUMBER
4'	1-F032	191-148T8
4'	2-F032	191-248T8
8'	2-F032	191-148-2T8
8'	4-F032	191-248-2T8
8'	1-F096	191-196T8
8'	2-F096	191-296T8
8'	1-F96HO	191-196T8-800
8'	2-F96HO	191-296T8-800

INSERT VOLTAGE AT END OF CATALOG NUMBER

NOTES:

1. AVAILABLE IN T12 HIGH OUTPUT
2. AVAILABLE WITH UL LISTED EMERGENCY BALLAST FOR ENCLOSED AND GASKETED FIXTURES.
3. FIXTURE LENGTHS ARE NON-STANDARD (SEE BACK DETAIL FOR ACTUAL DIMENSIONS)

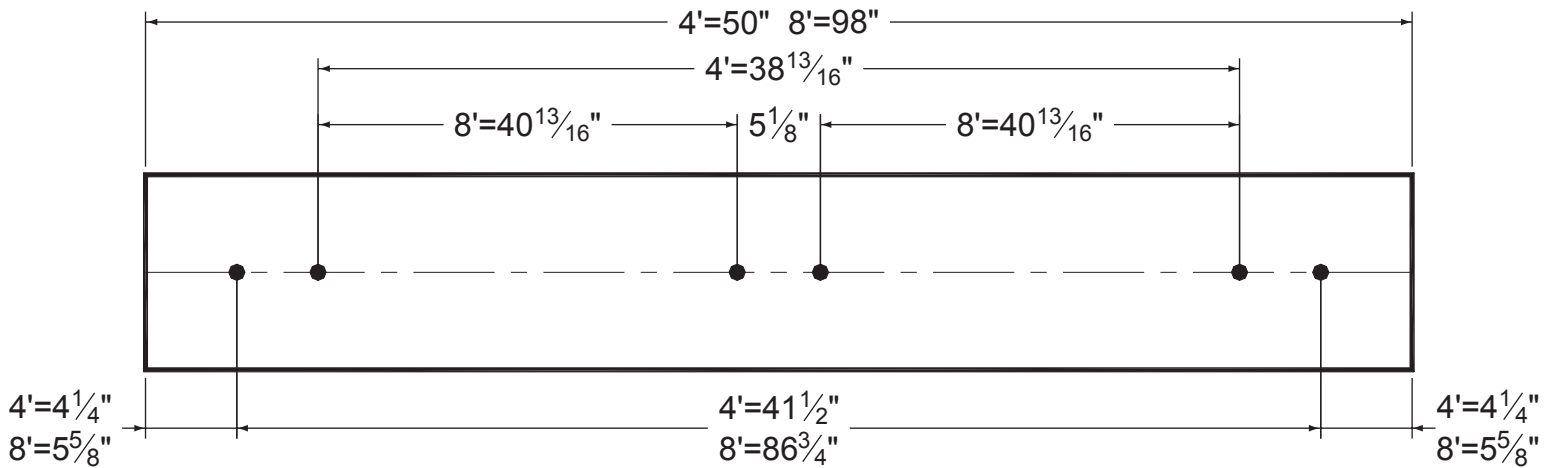
MANUFACTURING
1715 KIBBY ROAD - MERCED - CALIFORNIA - 95340
(209) 723-9120 - FAX: (209) 723-9131

SALES OFFICE
14722 WICKS BLVD. - SAN LEANDRO - CALIFORNIA - 94577-6718
(510) 667-6950 - FAX: (510) 667-6959

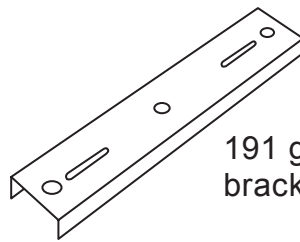
BACK DETAIL

● 1/4" DIA. STUD

Back detail symbols



ACCESSORIES



191 galvanized mounting
bracket - standard

NOTE

All fixtures must be installed, wired and grounded in accordance with the National Electric Code and all other applicable codes.

!!! WARNING !!!

RISK OF FIRE OR ELECTRICAL SHOCK. ELECTRICAL PARTS MAY BE DAMAGED WHEN DRILLING OR USING "TEK" SCREWS FOR INSTALLATION OF MOUNTING HARDWARE. CHECK ENCLOSED WIRING AND COMPONENTS. USE CAUTION WHEN DRILLING "TEK" SCREWS INTO A BLIND AREA. TO PREVENT WIRING DAMAGE DO NOT EXPOSE WIRING TO SHARP EDGES.

